





# CATALOGO DE **PRODUCTOS**

# KITCHEN

COOKING

GRILLS

MIXERS

BREAKFAST

*Enjoy it.*



## HOT AIR TECHNOLOGY

The circulation of hot air allows cooking on the entire surface of the food.



## GREAT CAPACITY

LARGE BASKET AND NON-STICK SURFACE



PACK INFO  
Height: 35.5 cm | Width: 32 cm | Length: 35.8 cm | Weight: 4.7kg



SAVING TIME  
AND ENERGY



CRISPY FOODS  
99% LESS OIL



MAKES YOUR  
MEALS HEALTHIER



TOUCH  
PANEL

# POWER FRYER 4.5

OIL FREE FRYER

POWER  
**1500W**

03:26  
DIGITAL  
TIMER

HOT AIR  
TECHNOLOGY

4.7L  
TOTAL  
CAPACITY



SAFE CLOSING

HANDLE FOR  
MANIPULATION

DIGITAL PANEL

## PROGRAMS



FISH



MEAT



POTATOES



CHICKEN



CUPCAKE



DEFROST

## FEATURES

- 1500W maximum power
- Hot air technology
- Touch control panel
- Digital timer
- 3.5L capacity
- Healthier meals
- Easy cleaning



UNIFORM  
PRESSURE  
COOKING

SOFTENS FOOD  
EVENLY



## QUICK COOK 7 PRESSURE COOKER

### PROGRAMS



MEAT



CHICKEN



VEGETABLES



CURRY



SOUP



BROTH



RICE



BEANS



ROAST



STIR FRY

### FEATURES

- 1200W maximum power
- 5.7L capacity
- Slow and programmable cooking
- Healthier meals
- Touch control panel
- Easy cleaning
- Digital timer



COOK  
TIMER



SLOW AND  
PROGRAMMED COOKING

POWER  
**1200W**



GREAT  
CAPACITY



TOUCH  
PANEL



DIGITAL  
DISPLAY



KEEP  
TEMPERATURE



EASY  
TO CLEAN



PANEL  
ACCESS TO COOKING  
PROGRAMS



CLOSING SYSTEM  
ROBUST AND PRECISE  
SNAP CLOSURE SYSTEM



12 PROGRAMS  
ONE-TOUCH COOKING  
PROGRAMS, FAST AND  
PRECISE.

# BP-A11900

## ELECTRIC GRILL INDUCTION COOKTOP

### FEATURES

- Induction
- Compact and ultra slim
- Includes stainless steel pot (3 liters)
- Highly sensitive smart touch surface
- Size 250mm
- High durability surface
- Digital screen
- Temperature control
- Digital Timer
- Wide temperature range 80-240°C
- 8 intelligent temperature levels
- 4 hour timer function
- Family safety lock
- Overheat protection
- Ultra quiet internal fan to dissipate heat
- Non-slip base, greater stability
- Premium glass surface for fast cleaning and superior wear resistance
- Protection: Voltage/ Current/ Pot Sensitive Device
- Auto power off function
- Copper coated aluminum coil, German Technology
- Housing material: plastic
- Compatible materials: Steel or cast iron, enameled iron, stainless steel
- Product Size: 415\*313\*49mm / Net/Gross Weight: 2.8/3.2kGS



SLOW COOKS



STIR FRY

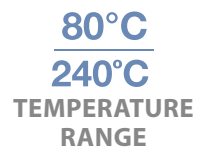


MEAT AND FRIES

INCLUDES  
STAINLESS  
STEEL POT



COMPACT  
AND ULTRA-SLIM  
DESIGN



PROTECTION  
LOCK



TEMPERATURE  
FULL CONTROL



EXACT TIME  
FOR COOKING



LOCK HEAT  
PROTECTION™



SECURITY  
LOCK™



DIGITAL PRECISION™  
TEMPERATURE CONTROL

POWER  
2000W

# BP-AI12900

## DOUBLE ELECTRIC COOKTOP



### FEATURES

- Plate power 1575W + 825W
- Stainless steel construction
- Surface diameter 180mm + 150mm
- High durability surface
- Uniform heat
- Temperature control
- 7 heat levels per plate
- Auto power off
- Exclusive design knobs
- Independent temperature control
- Operation indicator lights
- High quality thermostat
- Non-slip feet, greater stability
- No professional installation required
- Easy to use
- Quick clean
- Accepts all types of kitchen materials

### STAINLESS STEEL SURFACE

Heavy-duty construction iron surface ensures maximum heat transfer. Its standard size of 180mm and 150mm allows you to use all types of saucepans.

**POWER**  
**2400W**

FULLHEATING  
TEMPERATURE CONTROL

CAST  
IRON | HQ™  
UNIFORM HEAT

**Safety Thermal**  
Protection™

**14**  
HEAT  
LEVELS

THERMOSTAT

LIGHT  
INDICATOR

DOUBLE  
CONTROL

HIGH  
DURABILITY



# BP-AE6900

## ELECTRIC COOKTOP

### FEATURES

- High durability surface
- Operation indicator light
- Running light
- High quality thermostat
- Anti slip supports
- High stability
- No professional installation required
- Easy to use
- Product size: 270x260x75mm

POWER  
**1600W**

### STAINLESS STEEL SURFACE

Heavy-duty construction iron surface ensures maximum heat transfer. Its standard size of 180mm and 150mm allows you to use all types of saucepans.

**7**  
HEAT  
LEVELS

  
THERMOSTAT

  
HIGH  
DURABILITY

PACK INFO  
Height: 34,3 cm | Width: 31,5 cm | Length: 9,3 cm | Weight: 2,54kg



 **Safety Thermal**  
Protection™

FULLHEATING  
TEMPERATURE CONTROL

CAST  
IRON | **HQ**  
UNIFORM HEAT



# PROGRILL-400

## ELECTRIC GRILL



RESISTANT  
GLASS



SMART  
TEMPERATURE



COOL TOUCH  
HANDLE



5-LEVEL TEMPERATURE  
REGULATOR



DUAL HEAT  
2 IN 1



  
UltraCeramic  
technology

  
HEAT  
CONVECTION



FAST HEATING™

  
100%  
Healthy food



REMOVABLE TRAY  
EASY TO CLEAN 

The PROGRILL-400 model is completely removable, making cleaning and storage as easy as possible.

POWER  
2400W 

4TIMES  
+ DURABLE

### FEATURES

- Indicator light
- Adjustable temperature control
- Ignition switch
- Integrated grease tray
- Optimal design for different foods
- Non-slip base
- Electrical power supply:

220-240V~, 50-60Hz, 2000-2400W



## PROGRILL-200

### ELECTRIC GRILL WITH PRESS



EASY TO  
CLEAN



SMART  
TEMPERATURE



COOL TOUCH  
HANDLE



5-LEVEL TEMPERATURE  
REGULATOR



DUAL HEAT  
2 IN 1



POWER  
**2400W**

**4TIMES**  
+ DURABLE

#### FEATURES

- Indicator light
- Adjustable temperature control
- Ignition switch
- Integrated grease tray
- Optimal design for different foods
- Non-slip base
- Electrical power supply:

220-240V~, 50-60Hz, 2000-2400W



FAST HEATING™

**100%**  
Healthy food



**UltraCeramic**  
technology

Ceramic coating  
technology, which does  
not adhere any food and  
maximum durability.



**HEAT**  
CONVECTION™

It allows greater heat  
transmission, achieving  
perfect cooking and  
tastier foods.

# POWERBLADE 4000

## MIXER

**1000 W**  
POWERFUL & EFFICIENT

**VARIABLE SPEED**

**3 en1**  
MULTI FUNCTION

**TURBO EFFICIENT**

**SAFE LOCK™ SECURITY SYSTEM**



Locking system provides a kind of safe use.

**DOUBLE POWER SHIFT EFFICIENT**

Easily extracted ingredients provide 100% nutrient and vitamin extraction.

**ERGONOMIC AND COMPACT**

## PROGRAMS



**MEAT**  
Speed II  
8-10 Sec



**ONION**  
Speed II  
5-10 Sec



**CARROT**  
Speed II  
30-40 Sec



**APPLE**  
Speed II  
30-40 Sec



**GARLIC**  
Speed II  
20-30 Sec



**EGG**  
Speed II  
60 Sec

PACK INFO  
Height: 24 cm | Width: 14,4 cm | Length: 24,4 cm | Weight: 1,51kg



## ACCESORIES

BLENDER GLASS 700ML / 500ML CHOPPER / MIXER / STEEL ROD



**STAINLESS STEEL BLANDES**

You can turn the toughest ingredients into unique creations.

**POWER 1000W**

# POWERBLADE 4000

## MIXER

**1000 W**  
POWERFUL &  
EFFICIENT

**VARIABLE  
SPEED**

**3<sup>en</sup>1**  
MULTI  
FUNCTION

**TURBO  
EFFICIENT**

**SAFE LOCK™  
SECURITY SYSTEM**



Locking system provides a  
kind of safe use.

**DOUBLE POWER SHIFT EFFICIENT**

Easily extracted ingredients provide 100%  
nutrient and vitamin extraction.

**ERGONOMIC  
AND COMPACT**

## PROGRAMS



**MEAT**  
Speed II  
8-10 Sec



**ONION**  
Speed II  
5-10 Sec



**CARROT**  
Speed II  
30-40 Sec



**APPLE**  
Speed II  
30-40 Sec



**GARLIC**  
Speed II  
20-30 Sec



**EGG**  
Speed II  
60 Sec

PACK INFO  
Height: 26,3 cm | Width: 13,1 cm | Length: 29 cm | Weight: 1,3kg



**STAINLESS  
STEEL BLANDES**

You can turn the toughest  
ingredients into unique creations.

## ACCESORIES

BLENDER GLASS 700ML / 500ML CHOPPER /  
MIXER / STEEL ROD

**POWER**  
**1000W**

Specifications and images are subject to change without notice.



# POWERBLADE 4000

## MIXER

**850 W**  
MAX POWER

**VARIABLE SPEED**

**3 en 1**  
MULTI FUNCTION

**TURBO EFFICIENT**

**STEEL BLADES**

**GREAT CAPACITY**



### LARGE CAPACITY CONTAINER

1.25 lts. Blender Jug  
1.5 lts. Processor Bowl

### ACCESORIES

CREAM ACCESSORY / COARSE GRATER / FINE GRATER / SLICER

## PROGRAMS



**POWER**  
**850W**

PACK INFO  
Height: 36,6 cm | Width: 25,5 cm | Length: 43,1 | cm Weight: 4,3kg

Specifications and images are subject to change without notice.

# PROBLADE-500

## FOOD PROCESSOR



EASY TO  
CLEAN



SMART  
TEMPERATURE



COOL TOUCH  
HANDLE

### EASY TO CLEAN

All parts are easily disassembled.

### 2 SPEEDS

Shift function to chop most  
difficult ingredients.

## QuadBlade

TECHNOLOGY

### FEATURES

- 2 speeds
- 1.5 liter glass jug
- Metal body
- Super sharp stainless steel blades
- Quadblade Technology
- Powerful and quiet motor

POWER  
**600W**



**4 BLADES**  
STAINLESS STEEL.  
EASY TO WASH AND FIT.



**POWERFUL ENGINE**  
600W OF POWER.  
ULTRA QUIET & EFFICIENT.



**EASY TO CLEAN**  
DISASSEMBLE AND  
ASSEMBLE THE PARTS  
EFFORTLESSLY



**GLASS JAR**  
1.5LTS CAPACITY WITH  
NON-SLIP BASE.

# POWERMIX-4

## HAND BLENDER



### 500W OF LIGHT AND POWERFUL MOTOR POWER

Designed with German technology that allows long-term use and maximum performance.



### CONTROLLED SPEED EFFICIENT TURBO

A range of speed options for every mix, plus a turbo mode option for the toughest mixes.

500  
W

MAX  
POWER

5

SPEEDS



EJECTION  
POSITION



TURBO  
EFFICIENT



ERGONOMIC  
AND COMPACT

## ACCESORIES



POWER  
**850W**

## PROGRAMS



CHOCOLATE



FRUITS



CAKES



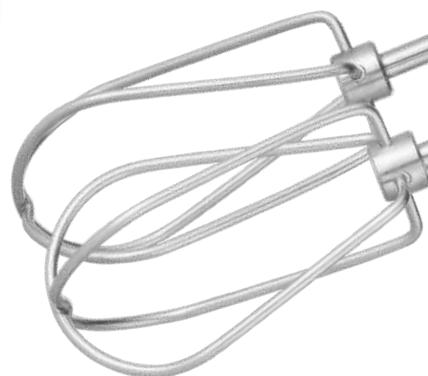
EGGS



CUPCAKES



CREAM





# CHROME-1300

## STAND MIXER

12

SPEEDS  
LEVELS

6L

CAPACITY

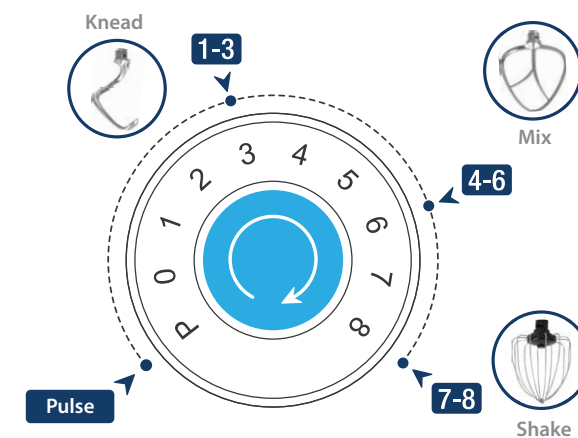
BEAT, MIX,  
KNEADDIGITAL  
CONTROL

### FEATURES

- 1300W motor
- 6L stainless steel bowl with double handle
- Finger control
- 12 speed + Turbo
- Mix / Beat / Knead
- Professional use

### ACCESORIES

FINE WIRE WHISK, HOOK DOUGH, COATED FLAT  
BEATER AND ANTI-SPLASH LID.



- P** For quick additions
- 1-3** Bread - Cakes - Pizza - Croissant - Pasta
- 4-6** Creams - Biscuits
- 7-8** Egg white - Meringue - Sauces

**POWER**  
**1300W**

# DIAMOND DELUXE

## TOASTER

**7**  
7 POWER  
LEVELS



HEATING, TOASTING  
AND THAWING



PERFECT  
TOAST



HEALTHY  
BREAKFAST

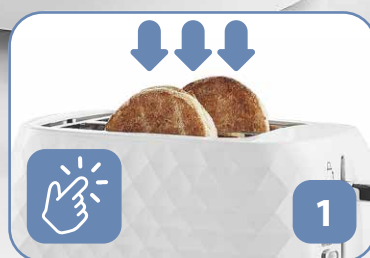


EASY  
TO USE

**POWER**  
**870W**

### FEATURES

- Number of levels: 7
- Functions: Warm, Cancel, Defrost, Toast
- With crumb tray



**PUT THE BREAD IN THE  
TOASTER.**



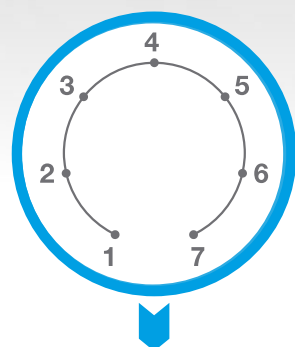
**CHOOSE THE COOKING  
POWER.**



**PUSH THE LEVER  
DOWN.**



**ENJOY THE READY  
TOAST!**



**BROWNING REGULATOR**



**CRUMB  
TRAY**

Comfortable and easy to clean  
and easily washable.



**FAST  
HEAT™**

Quickly heat your toasts optimizing  
the cooking time of your breakfasts  
and snacks.



**EASY  
TOAST™**

Your toasts will be perfectly even  
and crisp, preventing burned areas.

# DIAMOND

## TOASTER



HEATING, TOASTING  
AND THAWING



CAPACITY FOR  
2 TOASTS



HEALTHY  
BREAKFAST

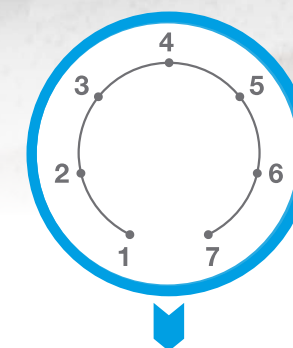


EASY  
TO USE

### FEATURES

- Number of levels: 7
- Functions: Warm, Cancel, Defrost, Toast
- With crumb tray

POWER  
**900W**



**BROWNING REGULATOR**



**CRUMB  
TRAY**

Comfortable and easy to clean  
and easily washable.



**FAST  
HEAT™**

Quickly heat your toasts optimizing  
the cooking time of your breakfasts  
and snacks.



**EASY  
TOAST™**

Your toasts will be perfectly even  
and crisp, preventing burned areas.



# CITRUS-700

## ELECTRIC JUICER



DUAL  
SPIN



EASY  
TO USE



EASY  
CLEANING



0.7L LARGE  
CAPACITY



AUTOMATIC  
START



INCLUDED 2 CONE SIZES  
FOR EACH TYPE OF FRUIT

Squeeze and extract 100%  
natural and healthy juicer from  
different fruits.



HIGH POWER  
ENGINE

Designed to extract all the juice  
very easily and effortlessly.



ORANGE



LEMON



LIME



GRAPEFRUIT



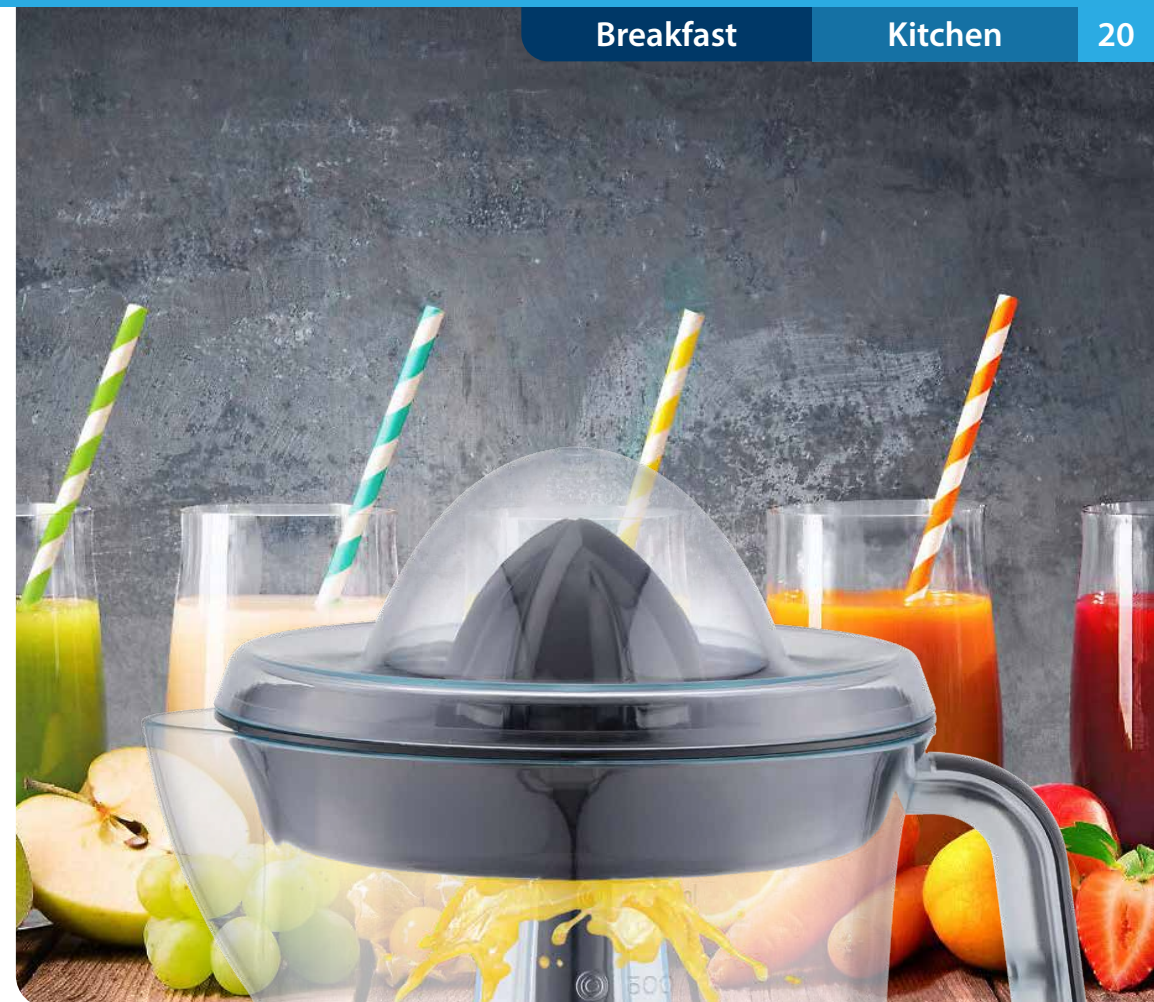
0.7L LARGE CAPACITY



METAL BODY WITH  
NON-SLIP BASE



2 SIZES OF CONES



© 500

**BLAUPUNKT**

# PERSONAL CARE

CLIPPERS

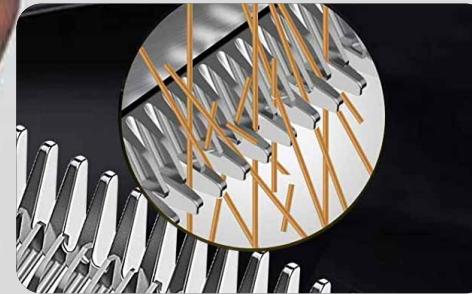
SCALES

DRYERS

HAIR STRAIGHTNER

***Enjoy it.***





STAINLESS STEEL BLADE



300 MINUTES OF MAXIMUM USE



-   
**POWERFULL ENGINE**
-   
**LED DISPLAY**
-   
**EASY TO CLEAN**
-   
**FAST CHARGE**
-   
**4 CUTTING LEVELS**

# ALPHA STYLE

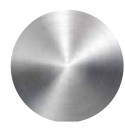
## WIRELESS CLIPPER

### FEATURES

- Powerful engine
- Stainless steel blades
- Led-display
- Fast charging / Long battery life
- Includes 4 combs
- Metal body
- Easy to clean
- Ergonomic design
- Suitable hair and beard

### ACCESORIES

-   
**4 COMBS**
-   
**OIL**
-   
**CLEANER**



**StainlessSTEEL**  
Body and blades



**POWERFUL ENGINE**  
**6000 RPM**

PACK INFO  
Height: 23,1 cm | Width: 23,1 cm | Length: 5,7 cm | Weight: 0,6kg

Specifications and images are subject to change without notice.



# LEGACY-8000

## WIRELESS HAIR CLIPPER / TRIMMER



ZERO BLADE



MAX LIFE BATTERY



POWERFUL ENGINE



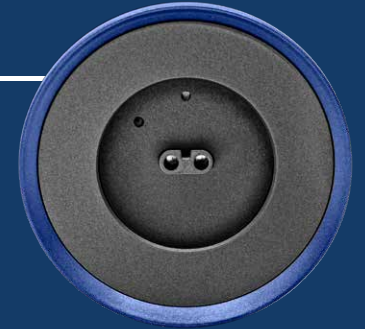
USB FAST CHARGING

### USB CHARGING DOCK

# 2.0 | 200

2.0 HS FULL CHARGE

200 MINUTES OF MAXIMUM USE



ZERO BLADE



WATERPROOF



REMOVABLE BLADES

### 4 CUTTING LEVELS

POWERFUL ENGINE

SILENT

WITHOUT PULLING HAIR



12 mm



9 mm






6 mm



3 mm

# BABY SOFT

## WIRELESS BABY HAIR CLIPPER

-  HAIR VACCUUM CLEANER
-  LED DISPLAY
-  HIGH DURATION BATTERY

 **PROTECTION AGAINST BACTERIA**

### FEATURES

- Powerful engine
- Stainless steel blades
- Led-display
- Fast charging / Long battery life
- Includes 2 combs
- Easy to clean
- Ergonomic design



**ULTRA QUIET**



**SAFE PROTECT / CUT PROOF**



### ACCESORIES

-  2 COMBS
-  OIL
-  CLEANER

PACK INFO  
Height: 23,1 cm | Width: 23,1 cm | Length: 5,7 cm | Weight: 0,6kg

Specifications and images are subject to change without notice.





# RAZOR-5D KIT

## WIRELESS SHAVER / TRIMMER



EASY TO CLEAN



FAST CHARGE



WASHABLE DESIGN



ERGONOMIC DESIGN



TRIMS BEARD, NOSE, EARS AND SIDEBURNS

Its precise cut allows for neat finishes on your face.

### USB CHARGING DOCK

2.0 | 200

2.0 HS FULL CHARGE

200 MINUTES OF MAXIMUM USE



PACK INFO  
Height: 9,9 cm | Width: 7,8 cm | Length: 19,2 cm | Weight: 0,27kg

Specifications and images are subject to change without notice.

# LEGACY 6000

## WIRELESS HAIR TRIMMER



POWERFULL  
ENGINE



FAST  
CHARGE



2 ADJUSTMENT  
COMBS



ANTIBACTERIAL  
PROTECTION

### FEATURES

- Stainless steel blades
- Maximum battery life
- Antibacterial™ Technology
- Powerful engine
- USB fast charge
- Adjustable height
- Compact and Portable
- LED indicator



USB FAST CHARGING



HEIGHT REGULATOR



### ACCESORIES



OIL



CLEANER



**ONE TOUCH OPENING**

The internal floating blades allow to adapt to all types of beard achieving a more efficient shave.



**TRIMMER**

The trimmer on the back that is ideal for sideburns, trimming and shaping your beard.

**ACCESORIES**



OIL



CLEANER

shaved time



left minutes sec min  
3s' unlock



**BLAUPUNKT**  
**BLADE 4D**

shaved time



left minutes sec min  
3s' unlock



**BLAUPUNKT**  
**BLADE 4D**

SMART DISPLAY / INDICADOR



WASH



CHG



FULL



LOCK

**BLADE 4D**

**WIRELESS SHAVER**



POWERFULL  
ENGINE



FAST  
CHARGE



INTELLIGENT  
CUT BLADE



RECHARGABLE  
BATTERY



SMART  
LOCK



QUICK  
CUT



**TRIMMER**

The trimmer on the back that is ideal for sideburns, trimming and shaping your beard.



**WASHABLE BLADES**

Washable blades that allow efficient cleaning and great maintenance.




**INTELLIGENT CUT BLADE**

The internal floating blades allow to adapt to all types of beard achieving a more efficient shave.

# RAZOR COMFORT

## WIRELESS SHAVER

-   
**FAST CHARGE**
-   
**POWERFUL ENGINE**
-   
**RECHARGABLE BATTERY**
-   
**LED INDICATOR**
-   
**ERGONOMIC DESIGN**

-   
**ONE TOUCH OPENING**
-   
**INTELLIGENT CUT BLADE**



PACK INFO  
 Height: 6,18 cm | Width: 14,4 cm | Length: 20,5 cm | Weight: 0,27kg

Specifications and images are subject to change without notice.



# ONE RAZOR

## FACIAL SHAVER



ADAPTIVE MOBILITY



SHAVER TRIMS AND SHAPES



WET AND DRY USE



FAST CHARGE



ERGONOMIC DESIGN

## ACCESORIES

5



3



1



# FACIAL KIT

## FACIAL HAIR CLIPPER KIT



SILENT MOTOR



PRECISE CUTS



EASY TO CLEAN



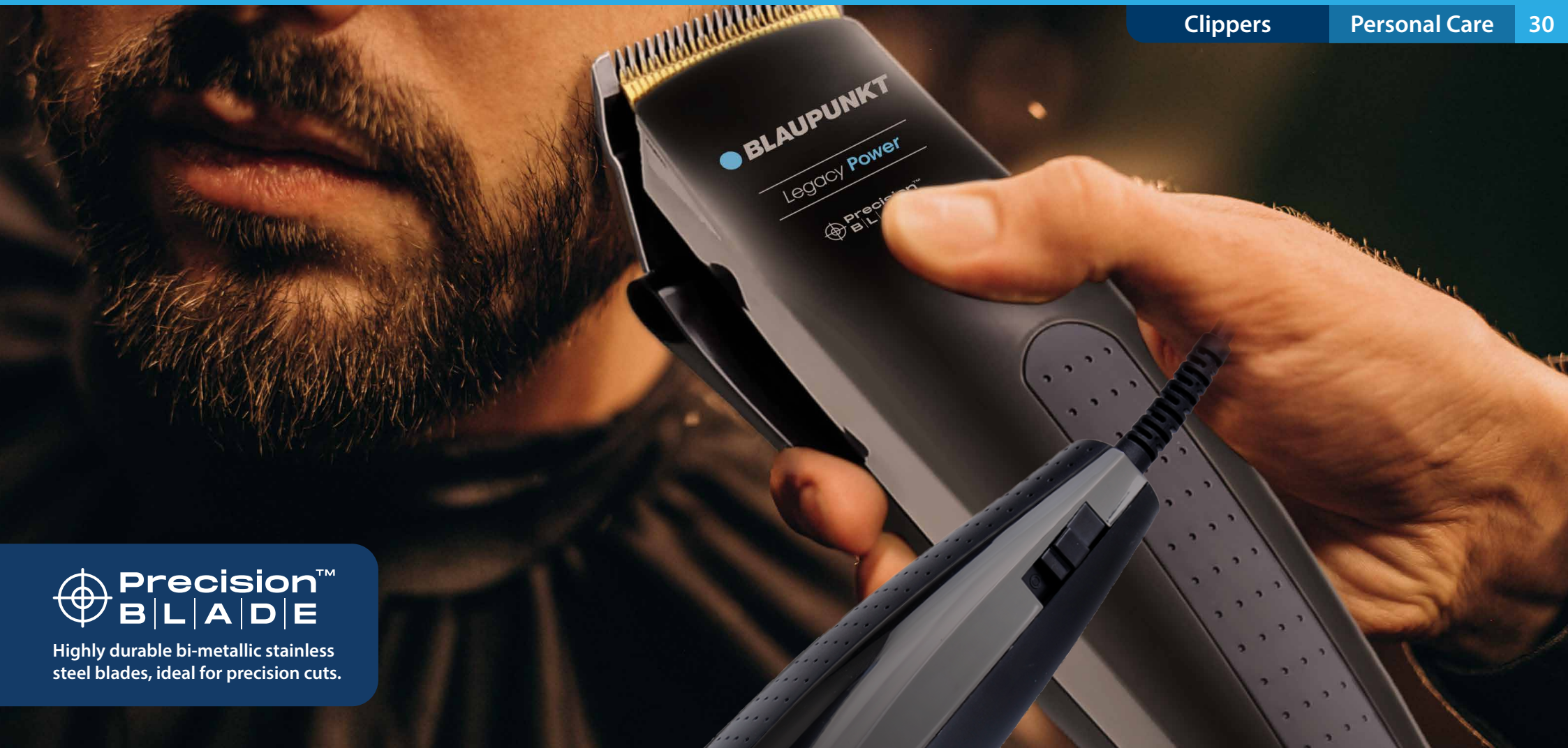
ERGONOMIC DESIGN



TRIMS BEARD, NOSE, EARS AND SIDEBURNS







3 IN 1 MULTIFUNCTION



**Precision™  
BLADE**

Highly durable bi-metallic stainless steel blades, ideal for precision cuts.

**LEGACY POWER**  
HAIR AND BEARD TRIMMER

-   
**MULTIPLE CUTS**
-   
**ERGONOMIC HANDLE**
-   
**POWERFUL ENGINE**
-   
**ANTIBACTERIAL PROTECTION**

PACK INFO  
Height: 6,18 cm | Width: 14,4 cm | Length: 20,5 cm | Weight: 0,27 kg



**ACCESORIES**

-   
**4 COMBS**
-   
**OIL**
-   
**CLEANER**
-   
**SLICER**
-   
**COMB**
-   
**SCISSOR**

**FEATURES**

- Adjustment lever
- Works on difficult hair
- For multiple styles of cuts
- Ultralight
- 220 - 240V~; 50-60Hz;
- Power: 8 - 11W

Specifications and images are subject to change without notice.







**Precision™**  
**BLADE**

Highly durable bi-metallic stainless steel blades, ideal for precision cuts.

# VET CLIPPER

## PET HAIR CLIPPER

-  DOES NOT HURT PETS
-  ERGONOMIC HANDLE
-  POWERFUL ENGINE
-  ANTIBACTERIAL PROTECTION

### FEATURES

- Adjustment lever
- Stainless steel blades
- Suitable for all kinds of pets
- Does not produce annoying noises
- 220 - 240V~; 50-60Hz;
- Power: 6 - 9W

### ACCESORIES

-  4 COMBS
-  OIL
-  CLEANER
-  PET BRUSH
-  NAIL FILE
-  SLICER
-  COMB
-  SCISSOR
-  PROFESSIONAL PLIERS



**StainlessSTEEL**  
Body and blades

# SMART SCALE

## SMART WEIGHT SCALE



SMART  
PRECISION



SCALE  
LINK



180Kg  
MAXIMUM  
LOAD



ULTRA  
RESISTANT



TEMPERATURE  
GAUGE



DIGITAL  
DISPLAY



LOW BATTERY AND  
OVERLOAD INDICATOR



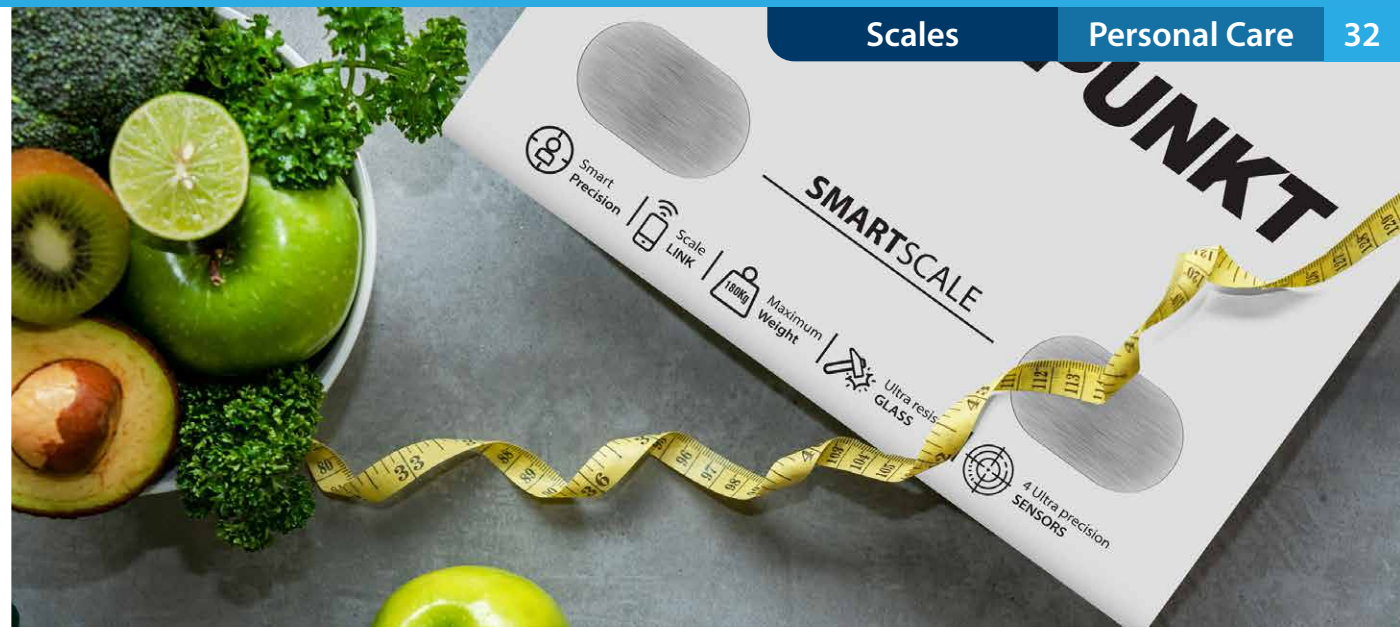
4 ULTRA-PRECISION  
SENSORS

### FEATURES

- Maximum load: 180kg
- Accuracy: 100g
- Units: Kg
- Temperature indicator
- Auto power off
- Low battery indicator
- Overload indicator
- Power: 2x AAA



OKOK  
International





# FIT SCALE

## SMART WEIGHT SCALE



SMART  
PRECISION



SCALE  
LINK



180Kg  
MAXIMUM  
LOAD



ULTRA  
RESISTANT



TEMPERATURE  
GAUGE



DIGITAL  
DISPLAY



LOW BATTERY AND  
OVERLOAD INDICATOR



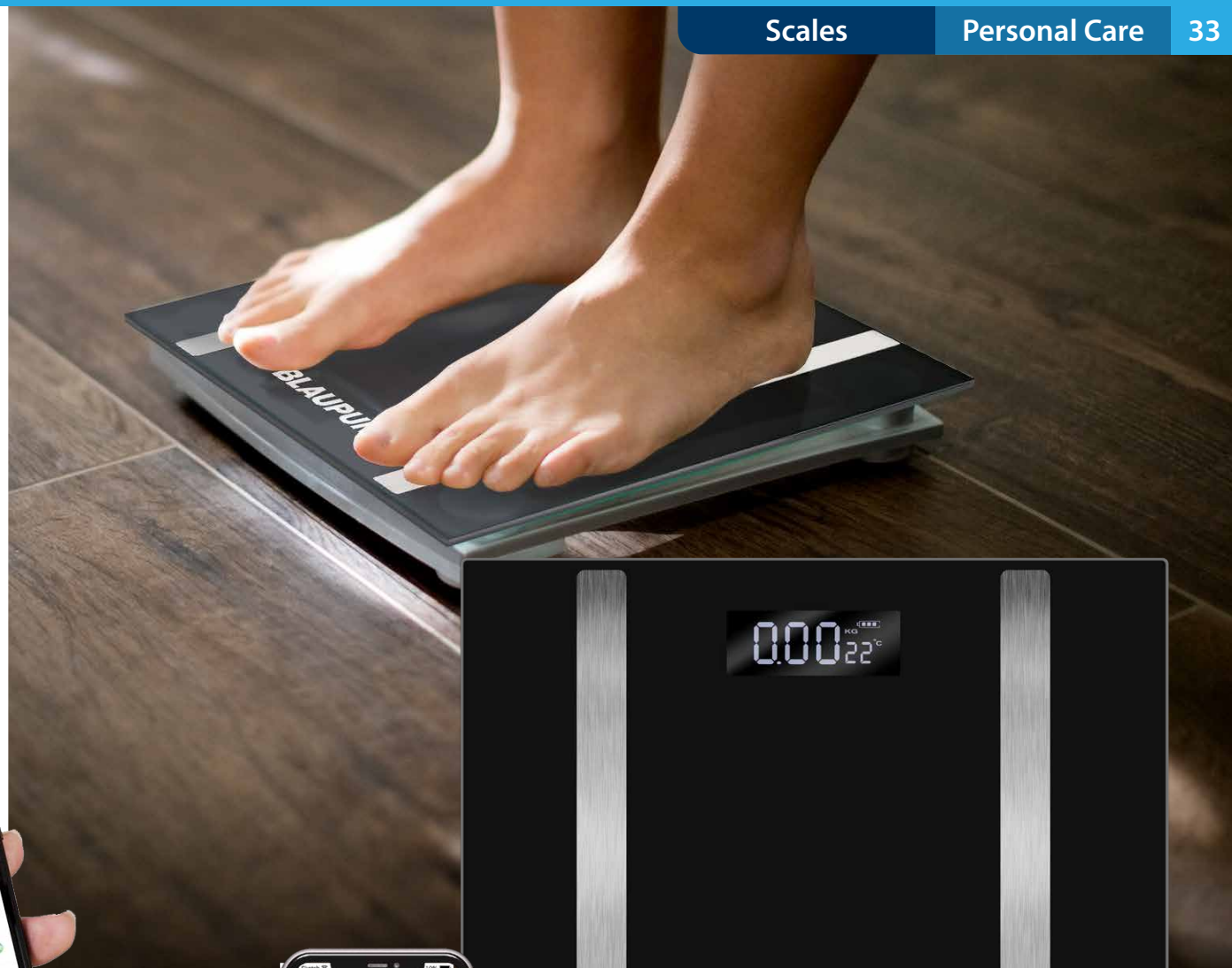
4 ULTRA-PRECISION  
SENSORS

## FEATURES

- Maximum load: 180kg
- Accuracy: 100g
- Units: Kg
- Temperature indicator
- Auto power off
- Low battery indicator
- Overload indicator
- Power: 2x AAA



OKOK  
International



**BLAUPUNKT**

FITSCALE



Smart  
Precision



Scale  
LINK



Maximum  
Weight



Ultra resistant  
GLASS



4 Ultra precision  
SENSORS

# DIAMOND SALON

## HAIR DRYER



COLD AND  
HOT AIR



REMOVABLE AIR  
CONCENTRATOR



REMOVABLE  
AIR FILTER



OVERHEAT  
PROTECTION

**3** 3 TEMPERATURE  
LEVELS

**6** 6 TEMPERATURE  
COMBINATIONS

**2** 2 AIR  
SPEEDS

Tourmaline **ION·PRO™**

### FEATURES

- 2 air speeds
- 3 heat levels
- Hot or cold air
- Removable air filter
- Removable air concentrator
- It has a ring to hang
- Overheat protection
- Unique design
- Tourmaline ION PRO Technology

**POWER**  
**2400W**

PACK INFO  
Height: 28.2 cm | Width: 24.5 cm | Length: 10 cm | Weight: 0.9kg



### GENERATION OF NEGATIVE IONS BY TOURMALINE COATING

Tourmaline is a semi-precious stone that naturally generates negative ions. These produce an anti-frizz effect on the hair, maintaining its natural moisture. In turn, this energy charge repairs the hair at a molecular level, recovering the structure of the hair fiber.

Specifications and images are subject to change without notice.



## GOLD WIND

### HAIR DRYER



COLD AND  
HOT AIR



REMOVABLE AIR  
CONCENTRATOR



OVERHEAT  
PROTECTION



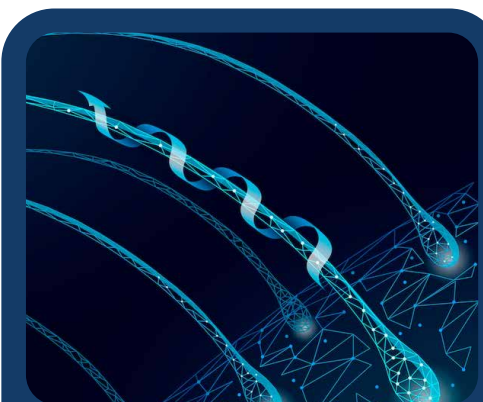
COMPACT  
DESIGN

#### FEATURES

- 2 Speeds and temperatures
- Hot or cold air
- Removable air concentrator
- Overheat protection
- It has a ring to hang
- Folding handle
- Ergonomic design
- Tourmaline ION PRO Technology

POWER  
**1900W**

Tourmaline **ION·PRO**™



#### GENERATION OF NEGATIVE IONS BY TOURMALINE COATING

Tourmaline is a semi-precious stone that naturally generates negative ions. These produce an anti-frizz effect on the hair, maintaining its natural moisture. In turn, this energy charge repairs the hair at a molecular level, recovering the structure of the hair fiber.

# GOLD CARE

## DIGITAL HAIR STRAIGHTENER



FAST HEATING



MULTIVOLTAGE SUITABLE FOR TRAVEL



ERGONOMIC AND COMPACT DESIGN



14 TEMPERATURE LEVELS



NO FRIZZ PERFECT STRAIGHTENING

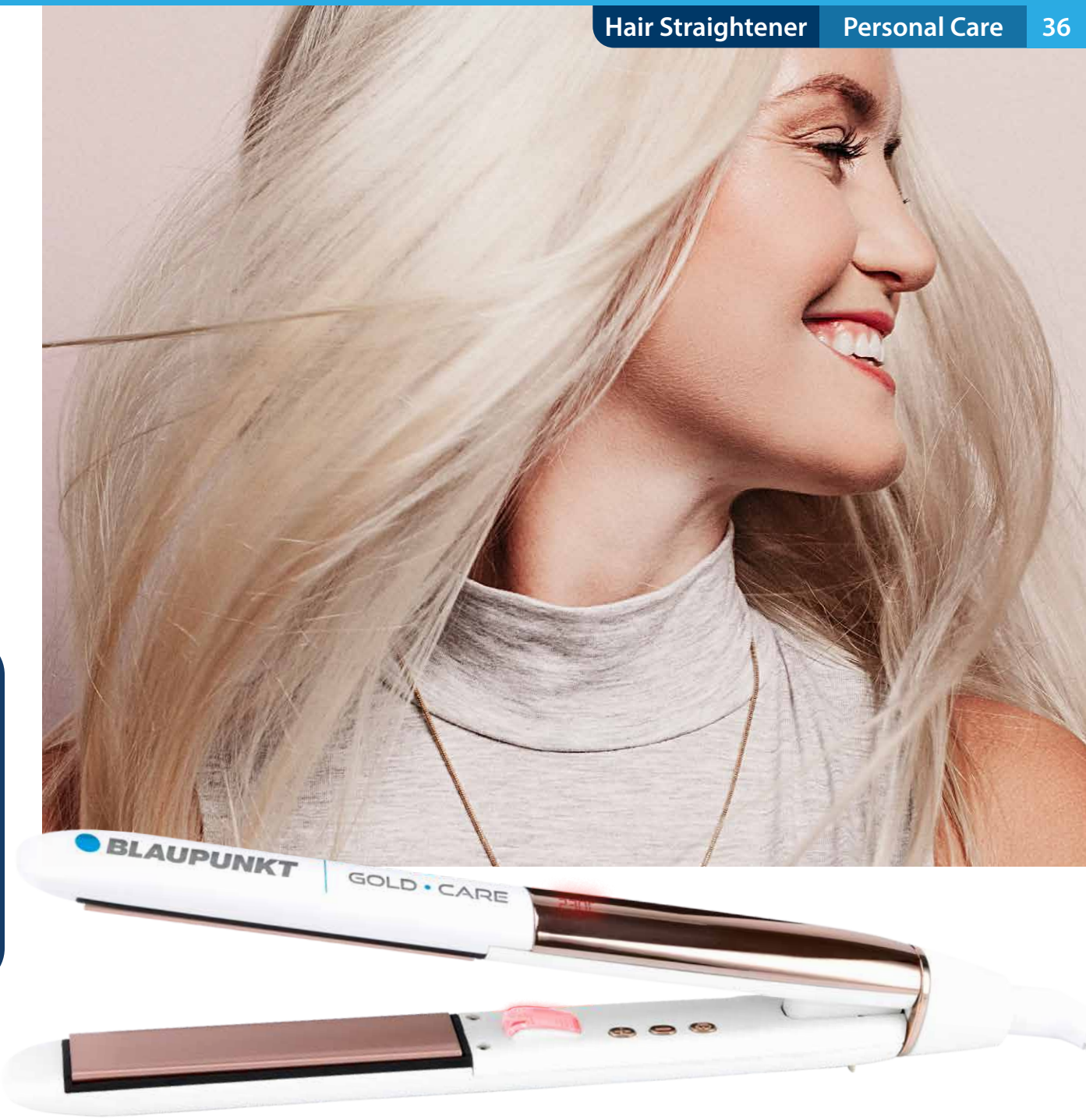
## Tourmaline ION·PRO™

### GENERATION OF NEGATIVE IONS BY TOURMALINE COATING

Tourmaline is a semi-precious stone that naturally generates negative ions. These produce an anti-frizz effect on the hair, maintaining its natural moisture. In turn, this energy charge repairs the hair at a molecular level, recovering the structure of the hair fiber.



## Advanced PTC™



PACK INFO  
Height: 34.5 cm | Width: 10 cm | Length: 5.5 cm | Weight: 0.47kg

Specifications and images are subject to change without notice.



# GIOVANNA

## DIGITAL HAIR STRAIGHTENER

**FAST HEATING**

**MULTIVOLTAGE SUITABLE FOR TRAVEL**

**ERGONOMIC AND COMPACT DESIGN**

**NO FRIZZ PERFECT STRAIGHTENING**

**14 TEMPERATURE LEVELS**



Advanced PTC™ CeramicIONCare™ TECHNOLOGY

### FEATURES

- Cold to the touch
- 60min auto OFF
- Max temperature: 200°C
- Sleek, non-slip design
- Multivoltage: Suitable for travel
- Straightens in 1 pass without damaging the hair
- Advanced PTC™ : Constant temperature
- Power supply: 100-240 V~; 50-60Hz; 40-45W

PACK INFO  
Height: 31.5 cm | Width: 8.5 cm | Length: 5.3 cm | Weight: 0.36kg



LED DISPLAY AND 360° CABLE



EASY USE, FULL CONTROL

Specifications and images are subject to change without notice.

# FRANCESCA

## DIGITAL HAIR STRAIGHTENER



FAST HEATING



MULTIVOLTAGE SUITABLE FOR TRAVEL



ERGONOMIC AND COMPACT DESIGN



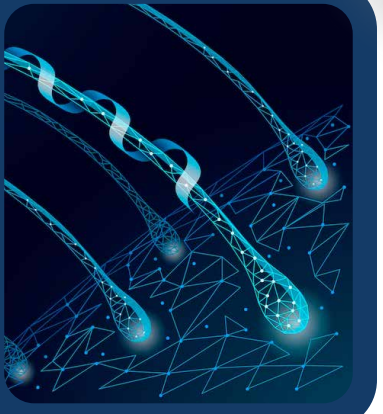
14 TEMPERATURE LEVELS



NO FRIZZ PERFECT STRAIGHTENING

### GENERATION OF NEGATIVE IONS BY TOURMALINE COATING

Tourmaline is a semi-precious stone that naturally generates negative ions. These produce an anti-frizz effect on the hair, maintaining its natural moisture. In turn, this energy charge repairs the hair at a molecular level, recovering the structure of the hair fiber.



### FEATURES

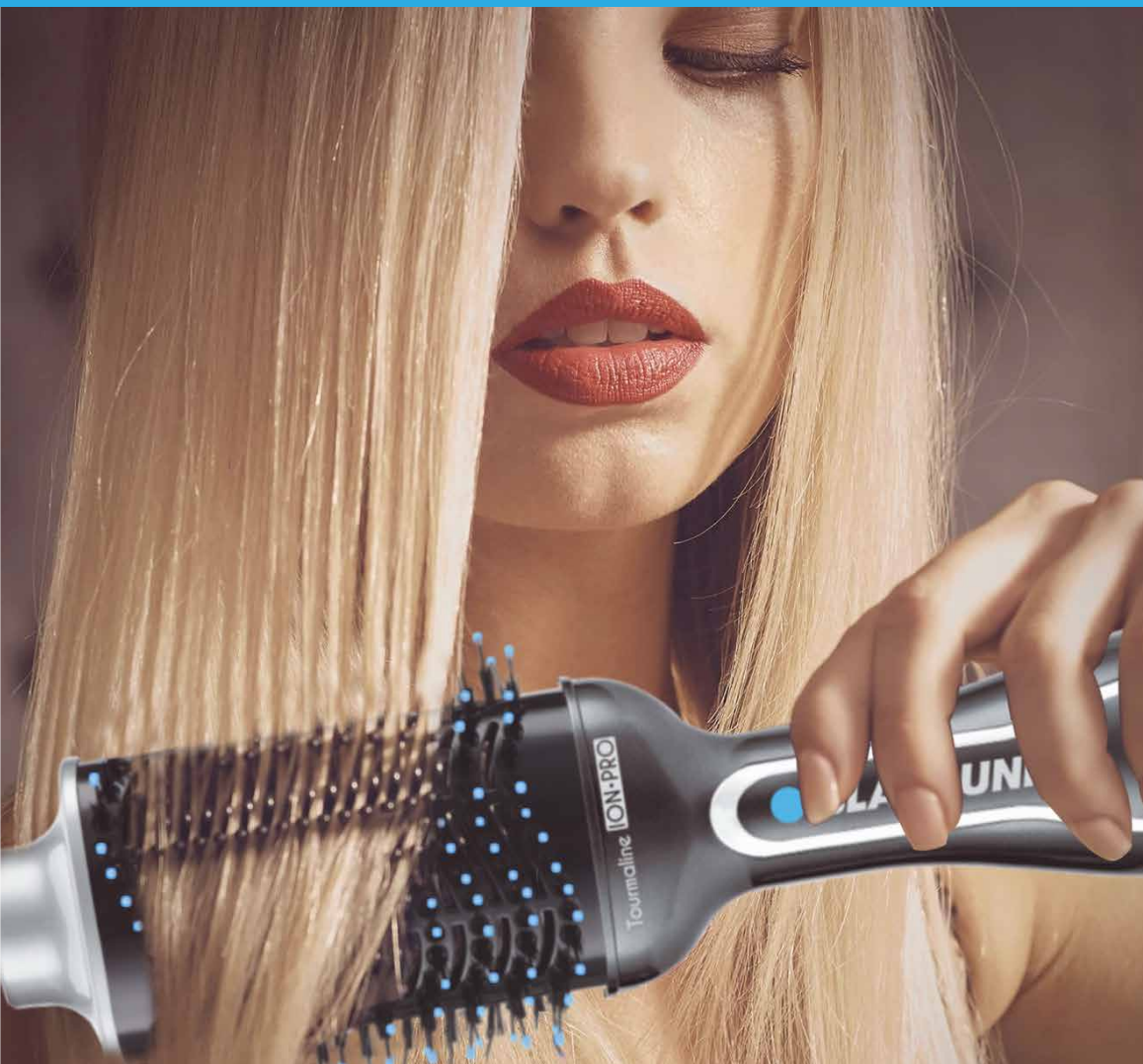
- Cold to the touch
- 60min auto OFF
- Max temperature: 230°C
- Sleek, non-slip design
- Multivoltage: Suitable for travel
- Straightens in 1 pass without damaging the hair
- Advanced PTCTM: Constant Temperature
- Power supply: 100-240 V~; 50-60Hz; 43-50W

PACK INFO  
Height: 9,4 in / 24 cm | Width: 8,5 in / 20,5 cm | Length: 3,1 in / 8,5 cm | Weight: 1,3 Lbs / 0,6 kg



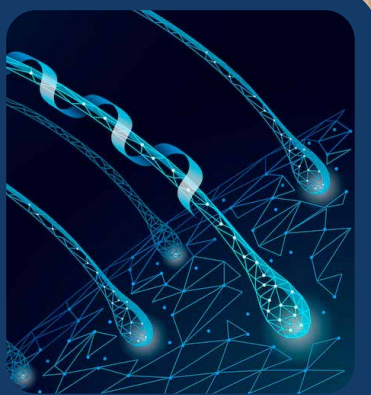
Tourmaline **ION·PRO**™ Advanced · **PTC**™

Specifications and images are subject to change without notice.



### GENERATION OF NEGATIVE IONS BY TOURMALINE COATING

Tourmaline is a semi-precious stone that naturally generates negative ions. These produce an anti-frizz effect on the hair, maintaining its natural moisture. In turn, this energy charge repairs the hair at a molecular level, recovering the structure of the hair fiber.



## BRUSH PRO

DRYER, VOLUMIZER AND STRAIGHTENER



HEAT LEVELS



200°  
MAXIMUM TEMPERATURE



COLD LEVEL



360°  
SWIVEL  
CORD



HANGING  
RING



ROUND EDGES  
TO CREATE VOLUME AND WAVES



OVAL BRUSH  
TO STRAIGHTEN HAIR

### FEATURES

- Straightening brush
- Volumizer
- Dryer
- Curved sides to straighten hair
- Round edges to create volume and waves
- Three temperature options



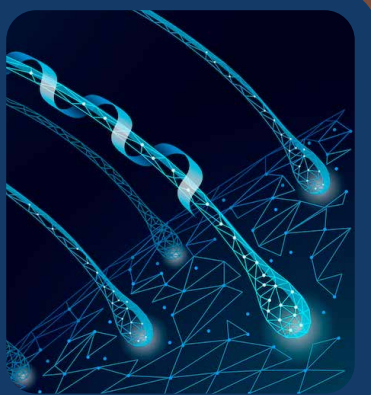
**POWER**  
**1400W** ⚡ Tourmaline **ION-PRO™**





### GENERATION OF NEGATIVE IONS BY TOURMALINE COATING

Tourmaline is a semi-precious stone that naturally generates negative ions. These produce an anti-frizz effect on the hair, maintaining its natural moisture. In turn, this energy charge repairs the hair at a molecular level, recovering the structure of the hair fiber.



## BRUSH CARE

### STRAIGHTENING BRUSH



360°  
SWIVEL  
CORD



TEMPERATURE  
INDICATOR DISPLAY

BEFORE



AFTER



11 TEMPERATURE LEVELS

Adaptable for each type of hair.

### FEATURES

- Maximum temperature 200°
- 60 minutes auto OFF
- Temperature between 150° to 200°
- TourmalineION PRO technology
- 5° temperature steps



OVAL BRUSH

TO STRAIGHTEN HAIR



MULTIVOLTAGE

SUITABLE FOR TRAVEL



Advanced · PTC™ Tourmaline ION·PRO™



**HOME**

***Enjoy it.***





**AUTO STOP  
FUNCTION**

**ALUMINUM  
REINFORCED  
HANDLE**

**5 METER  
HIGH PRESSURE  
HOSE**

**POWER**  
**2100W**

**HIDROWASH 1400**  
**HIGH PRESSURE WASHER**

**450  
L/H**  
MAXIMUM  
FLOW

**145  
BAR**  
MAXIMUM  
PRESSURE

  
REMOVE ALL  
KINDS OF DIRT

  
REACH DIFFICULT  
ACCESS SPACES

  
BUILT-IN WATER  
FILTER

  
SELF-SUCTION  
FUNCTION



HOME



BOATS



CARS



BIKES

**EcoEfficient™**



**Savings in water**

**HighPressure™**



**& maximum  
performance**

**True Clean™**



**Integrated  
detergent tank**

## FEATURES

- Max Pressure: 145bar (14.5Mpa)
- Maximum flow: 450L/H
- Maximum power: 2100W
- Power cable: 5m.
- High pressure hose: 5m.
- Max temperature of water: 50°C
- Quick Insert Spray Gun
- Extender lance
- Quick connector
- Power supply: 220-240V~, 50/60Hz, 2100W
- Auto stop function
- Safe pump function
- Aluminum handle

# HIDROWASH 1000

## HIGH PRESSURE WASHER



BUILT-IN WATER  
FILTER

340  
L/H

MAXIMUM  
FLOW

110  
BAR

MAXIMUM  
PRESSURE



REMOVE ALL  
KINDS OF DIRT



REACH DIFFICULT  
ACCESS SPACES



HOME



BOATS



CARS



BIKES

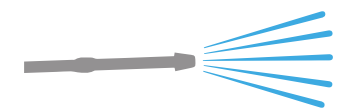
*EcoEfficient*<sup>™</sup>



Up to  
80%

*Savings in water*

*HighPressure*<sup>™</sup>



*& maximum  
performance*



5 METER  
HIGH PRESSURE  
HOSE



REINFORCED  
HANDLE



FAST  
CONNECTOR



AUTO STOP  
FUNCTION

### FEATURES

- Max pressure: 110 bar
- Maximum Flow: 340L/H
- Power: 1400W
- max temperature of water: 50°C
- 3m power cable.
- 3m high pressure hose.
- Quick Insert Spray Gun
- extender lance
- quick connector
- Power supply: 220-240V~, 50-60Hz, 1400W
- Auto stop function
- Safe pump function

POWER  
**1400W**



# TOOLS

GRINDERS

DRILLS

SAWS

POLISHERS

TOOLS KIT

CIRCULAR SAW

ORBITAL SANDER

*Enjoy it.*





## ENDURANCE 1250

### GRINDER / ANGLE GRINDER

10000  
RPM

MAXIMUM  
SPEED



DIAMETER  
125mm



SUITABLE FOR  
PROFESSIONAL USE



DUST  
PROTECTION



#### INTENSIVE USE

Its powerful motor is designed to maximize usage time.



#### HIGH PERFORMANCE ENGINE

Indispensable for cutting, polishing and sanding.

#### FEATURES

- Maximum power: 1200W
- Voltage: 220V~, 50-60Hz, 1200W
- No load speed: 10000/min - rpm (depends on the region, see product label)
- Maximum disc size: 125mm

PACK INFO  
Height: 42 cm | Width: 12 cm | Length: 15 cm | Weight: -kg

#### CONTROLS AND PARTS



Spindle lock button 1

Handle 2

Ignition switch 3

Cable 4

Disc Guard 5

Side handle 6

# ENDURANCE 900

## GRINDER / ANGLE GRINDER

10000  
RPM

MAXIMUM  
SPEED



DIAMETER  
115mm



DUST  
PROTECTION

POWER  
**900W**

### FEATURES

- Maximum power: 900W
- Voltage: 220V~, 50-60Hz, 1200W
- No load speed: 11000/min - rpm (depends on the region, see product label)
- Maximum disc size: 115mm

### CONTROLS AND PARTS



- Spindle lock button **1**  
 Handle **2**  
 Ignition switch **3**  
 Cable **4**  
 Disc Guard **5**  
 Side handle **6**



#### INTENSIVE USE

Its powerful motor is designed to maximize usage time.



#### HIGH PERFORMANCE ENGINE

Indispensable for cutting, polishing and sanding.





# ENDURANCE 800

## GRINDER / ANGLE GRINDER

11000  
RPM

MAXIMUM  
SPEED



DIAMETER  
115mm



DUST  
PROTECTION

POWER  
**820W**



### INTENSIVE USE

Its powerful motor is designed to maximize usage time.



### HIGH PERFORMANCE ENGINE

Indispensable for cutting, polishing and sanding.

### FEATURES

- Maximum power: 820W
- Voltage: 220V~, 50-60Hz, 1200W
- No load speed: 11000/min - rpm (depends on the region, see product label)
- Maximum disc size: 115mm

PACK INFO  
Height: 32 cm | Width: 12.5 cm | Length: 13 cm | Weight: kg

### CONTROLS AND PARTS



- Spindle lock button 1
- Handle 2
- Ignition switch 3
- Cable 4
- Disc Guard 5
- Side handle 6

# DRILLFORCE-20 IMPACT

## CORDLESS DRILL



LITHIUM  
BATTERY



CHUCK  
10mm

20  
V

GREAT  
POWER



COMPACT  
DESIGN



### INTENSIVE USE AND ROBUST

Its powerful motor is designed to maximize usage time. Its robust construction allows intensive use.



### 2 SPEED / REVERSE

Allows you to use the drill in multiple situations.



### LED LIGHT

Allows to illuminate the areas dark for comfort.



INCLUDED 2  
BATTERIES

## FEATURES

- Power: 20V
- Maximum torque: 40 N.m
- No-load speed: 0-500 / 0-1500 rpm
- Twist adjustment: 25+2
- Chuck: 10mm

## ACCESSORIES



PACK INFO  
Height: 9,4 in / 24 cm | Width: 8,5 in / 20,5 cm | Length: 3,1 in / 8,5 cm | Weight: 1,3 lbs / 0,6 kg



## CONTROLS AND PARTS



- Torque Control 1
- Keyless chuck 2
- LED indicator light 3
- Variable speed switch 4
- Lithium battery 5
- Screwdriver / Drill / Hammer 6
- Speed selector 7
- Reverse selector 8

### Ventilation





# DRILLFORCE-12

## CORDLESS DRILL



LITHIUM  
BATTERY



CHUCK  
10mm

12  
V

GREAT  
POWER



COMPACT  
DESIGN



### INTENSIVE USE AND ROBUST

Its powerful motor is designed to maximize usage time. Its robust construction allows intensive use.



BATTERY  
INCLUDED



### 2 SPEED / REVERSE

Allows you to use the drill in multiple situations.



### LED LIGHT

Allows to illuminate the areas dark for comfort.

## FEATURES

- Power: 12V
- Maximum torque: 30 N.m
- No-load speed: 0-400 / 0-1400 rpm
- Twist adjustment: 18+1
- Chuck: 10mm



## CONTROLS AND PARTS



- 1 Torque Control
- 2 Keyless chuck
- 3 LED indicator light
- 4 Variable speed switch
- 5 Lithium battery
- 6 Speed selector
- 7 Reverse selector

### Ventilation



# IMPACTFORCE-750

## IMPACT DRILL



VARIABLE SPEED  
0-3000 RPM



CHUCK  
1.2" 13mm



STRIKER  
FUNCTION



### REVERSE FUNCTION

It changes the direction of speed according to the work to be done.



### INTENSIVE USE

Its powerful motor is designed to maximize usage time.

POWER  
**750W**



## FEATURES

- Maximum power: 750W
- No load speed: 0-3000/min - rpm
- 1/2" 13mm chuck
- Striker function



NON-SLIP  
HANDLE

## CONTROLS AND PARTS



- 1 Chuck
- 2 Handle
- 3 Impact selector
- 4 Direction selector lever
- 5 Ignition switch
- 6 Wire

# POWERKIT 800

## TOOLS KIT



IMPACT  
DRILL

142  
PCS

PIECES



COMPLETE



MULTI  
PURPOSE

### FEATURES

- 1x - Cordless Impact Drill
- 1x - 12V battery
- 1x - Charger
- 1x - Measure tape (Brasil)
- 1x - Adhesive tape
- 1x - Hammer
- 1x - Saw
- 1x - Parrot beak pliers
- 1x - Wire pliers
- 1x - Cutter
- 5x - Sheets
- 1x - Key
- 10x - Screwdriver bits
- 90x - Accessories
- 1x - Screwdriver with interchangeable bits
- 1x - Phillips screwdriver
- 1x - Flat screwdriver
- 8x - Allen keys: 1.5-6mm.
- 2x - Tweezers
- 4x - Precision Screwdrivers
- 1x - Pole Finder: 12-220V
- 3x - Wall Wick
- 3x - Wick for metal
- 1x - Screwdriver Extension
- 1x - Briefcase

### DRILL FEATURES

Voltage: 12V

No load speed: 0-400 / 0-1350 rpm

Chuck: 10mm

Maximum torque: 15N/m

Twist setting: 18+2



### CONTROLS AND PARTS



- 1 Torque Control
- 2 Keyless chuck
- 3 Variable speed switch
- 4 Lithium battery
- 5 Button to remove battery
- 6 Screwdriver / Drill
- 7 Speed selector
- 8 Ventilation
- 9 Reverse selector





# PROKIT 600

## TOOLS KIT

143  
PCS

PIECES



COMPLETE



MULTI  
PURPOSE

### FEATURES

- 9x - Socket sockets: 5-13mm.
- 1x - Screwdriver with interchangeable bits
- 1x - Measure tape (Brasil) / Teflon Tape (ARG)
- 1x - Flat screwdriver 6"
- 1x - Adhesive tape
- 8x - Allen keys: 1.5-6mm
- 1x - Hammer
- 2x - Tweezers
- 1x - Parrot beak pliers
- 4x - Precision Screwdrivers
- 1x - Wire pliers
- 1x - Pole Finder: 12-220V
- 1x - Cutter
- 1x - Scissor
- 5x - Blades for stilet
- 1x - Flashlight
- 10x - Screwdriver bits
- 1x - Briefcase
- 90x - Accessories

#### PACK INFO

Height: 42 cm | Width: 8.5 cm | Length: 30 cm | Weight: 4kg





# PROKIT 400

## TOOLS KIT

134  
PCS

PIECES



COMPLETE



MULTI  
PURPOSE

### FEATURES

- 9x - Socket sockets: 5-13mm.
- 90x - Accessories
- 1x - Measure tape (Brasil) / Teflon Tape (ARG)
- 1x - Phillips screwdriver 6"
- 1x - Flat screwdriver 6"
- 1x - Adhesive tape
- 8x - Allen keys: 1.5-6mm.
- 1x - Hammer
- 2x - Tweezers
- 1x - Saw
- 1x - T-Wrench
- 1x - Cutter
- 4x - Precision Screwdrivers
- 1x - Wrench
- 1x - Pole Finder: 12-220V
- 10x - Screwdriver bits
- 1x - Briefcase





# POWERKIT 200

## TOOLS KIT

20  
PCS  
PIECES

COMPLETE

MULTI  
PURPOSE

### FEATURES

- 1x - Measure tape (Brasil) / Teflon Tape (ARG)
- 1x - Adhesive tape
- 1x - Hammer
- 1x - Cutter
- 1x - Key
- 2x - Phillips screwdrivers
- 2x - Flat screwdrivers
- 8x - Allen keys: 1.5-6mm
- 1x - Clamp
- 1x - Pole Finder: 12-220V
- 1x - Briefcase



# CIRCULAR 185

## CIRCULAR SAW



MAX SIZE  
185mm

5500  
RPM  
NO LOAD  
SPEED

POWER  
**1550W**

### FEATURES

- Maximum power: 1550W
- No load speed: 5500/min - rpm
- Maximum size: 185mm
- Cutting angle: up to 45°
- Cutting depth: 64mm
- Voltage: 220V~, 50-60Hz, 1550W  
(depends on the region, see label on product)

### CUTTING GUIDE

For better stability and precise cuts.

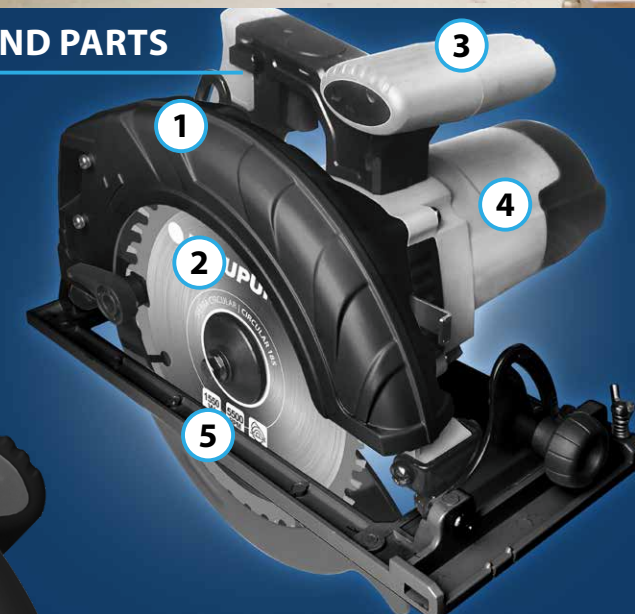
### ANTI-SLIP DESIGN

It allows greater precision and provides greater security.

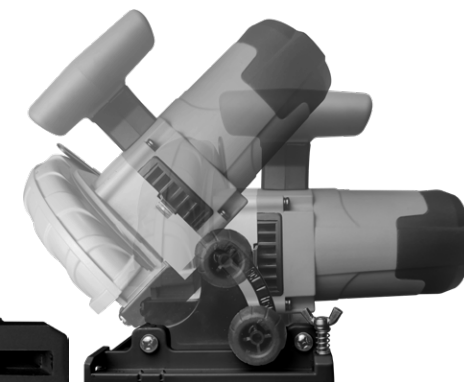


### CONTROLS AND PARTS

- 1 Security cover
- 2 Cutting disc
- 3 Handle
- 4 Main unit
- 5 Cutting guide



CUTTING ANGLE 45°MM  
CUTTING DEPTH 64MM





# POLISHERPLUS-1200

## POLISHER

**6**  
6 SPEED  
LEVELS

**4100**  
RPM  
MAXIMUM  
SPEED

  
SUITABLE FOR  
PROFESSIONAL USE

  
NON-SLIP  
DESIGN

POWER  
**1400W** ⚡

## FEATURES

- Potencia máxima: 1400W
- Velocidad sin carga: 700-4100/min - rpm
- Tamaño máximo: 180mm
- Niveles de velocidad: 6
- Voltaje: 220V~, 50-60Hz, 1400W  
(depende de la región, ver etiqueta sobre producto)



**SIZE: 180mm**

It has a large size with little weight.



**MULTIFUNCTION**

It adapts to the different usage situations.

## CONTROLS AND PARTS



Front handle **1**

Polishing accessory **2**

Speed selector **3**

Ignition trigger **4**

Handle **5**



# SANDERPLUS-185

## ORBITAL SANDER



**180  
W**

SELF-SUCTION  
FUNCTION

**93x  
185  
mm**  
SANDPAPER  
SIZE



INTENSIVE USE  
FOR MORE CONTROL

### FEATURES

- Maximum power: 180W
- Voltage: 220V~, 50-60Hz, 180W
- No load speed: 12000/min - rpm (depends on the region, see product label)
- Sandpaper size: 93x185mm

PACK INFO  
Height: 9,4 in / 24 cm | Width: 8,5 in / 20,5 cm | Length: 3,1 in / 8,5 cm | Weight: 1,3 lbs / 0,6 kg



#### INTENSIVE USE

Its powerful motor is designed to maximize usage time.



#### MULTIFUNCTION

For all types of wood and furniture.



**DRONES**

*Enjoy it.*



# SKY HAWK

SMART GPS + ELECTRONIC STABILIZATION + 2.7 DRONE



GESTURE CONTROL



LONG FLIGHT TIME



GPS SATELLITE POSITIONING

3 AXIS GIMBAL PLATFORM



IN THE BOX



DRONE SKYHAWK WITH BATTERY INCLUDED

REMOTE CONTROL



4 SPARE PROPELLERS

FOLDABLE AND PORTABLE

DIMENSIONS AND WEIGHT

HEIGHT/ 8 cm  
WIDTH/ 27,5 cm  
DEPTH/ 25,5 cm

WEIGHT **0.5kg**

5G WI-FI TRANSMISSION

WAYPOINT FLIGHT

RECHARGABLE BATTERY

360° POINT OF INTEREST



BODY

Where the antennas, sensors, battery and camera are housed.



BASE

Provide excellent stability to the drone on landing

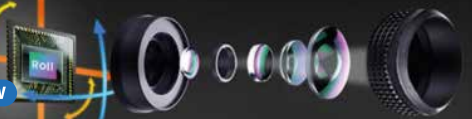


PROPELLERS

Aerodynamically optimized to improve performance

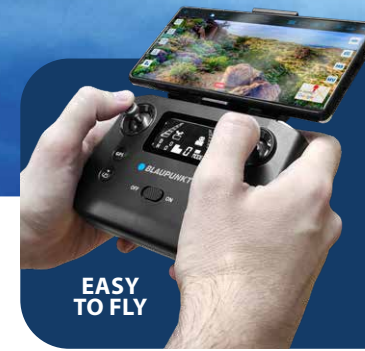
TURN Y  
TURN X  
YAW  
PITCH

ELECTRONIC STABILIZATION



2.7K SENSOR

Photos and videos with improved quality, sharpness and colour enhanced.



EASY TO FLY

GPS  
**PRECISE POSITIONING**

The location is controlled by its GPS receiver.

**ONE CLICK RETURN**



Thanks to the ONE CLICK RETURN just click a button to return home.

**SPEED**



Guaranteed fun with maximum speed, precise movements.

**TILT CAMERA**



Record professional videos with its electronic controlled tilt function.



# RAPTOR

SMART GPS + ELECTRONIC STABILIZATION + 4K DRONE



4K

GPS  
PRECISE  
POSITIONING

BRUSHLESS  
MOTOR

SMART IMAGEN  
FOLLOWING

5G  
WIFI

ONE KEY  
RETURN

ONE KEY  
TAKE-OFF

GESTURE  
CONTROL

CELL PHONE  
STAND

PHOTO  
VIDEO

#### IN THE BOX

Drone RAPTOR  
Battery  
Remote Control  
4 Spare Propellers



REMOTE CONTROL



# MIRAGE

## SMART GPS + FULL HS DRONE



**CAMERA MODES**



**GPS  
PRECISE POSITIONING**



**LONG BATTERY**



**ALTITUDE HOLDING**



**FPV**



**AUTOMATIC BEAUTY**



**ONE KEY TAKE-OFF**



**GESTURE CONTROL**



**1080P FULL HD**



**PHOTO VIDEO**



**IN THE BOX**  
 Drone MIRAGE  
 battery  
 remote control  
 4 spare propellers



**REMOTE CONTROL**

PACK INFO  
Height: 28 cm | Width: 21.5 cm | Length: 8 cm | Weight: 0,7kg

Specifications and images are subject to change without notice.



# DAGGER

## FULL HD DRONE



CAMERA  
MODES



SPEED  
ADJUSTABLE



ONE KEY TAKE OFF  
/ LANDING



HEADLESS  
MODE



WIFI



AUTOMATIC  
BEAUTY



GESTURE  
PHOTOGRAPHY



1080P  
FULL HD



PHOTO  
VIDEO

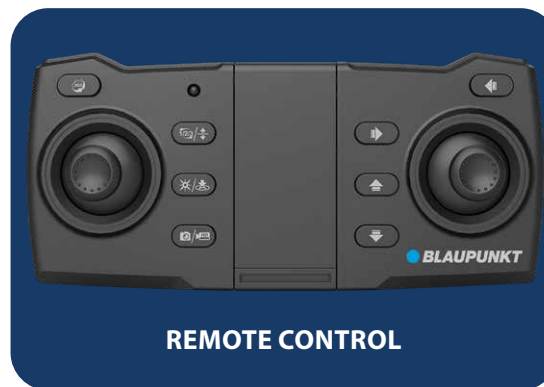


360°  
POWERTURN



### IN THE BOX

Dron dagger  
battery  
remote control  
4 spare propellers  
4 propeller protectors



REMOTE CONTROL

#### DISTRIBUTED BY

- **Argentina:** Importa, distribuye y garantiza Someco Electronics S.A. CUIT: 30-70217915-3  
Reconquista 336 - Piso 6 OF-65 - (C1003ABH) - CABA - República Argentina Tel.: (54-11) 4655-3333
- **Brasil:** Importado e distribuido por SOMECO Ind. Com. Import. Export. Ltda. CNPJ: 01.872.488/0001-00 Origem China. Validade: Indeterminada.
- **Chile:** Importa, distribuye y garantiza Electronica Megatel SA (Someco Andina), Porvenir 140, Santiago Centro - Chile. contacto@somecoandina.cl
- **United States:** Imported, distributed and guaranteed by Someco America Corp. 7630 NW 25th St #1, Miami, FL 33122, USA



