

GALAXY > SERIES

GALAXY 350

MOVING HEAD LIGHT



3in1 BEAM/SPOT/WASH

HIGH POWER 350W

PHILIPS LAMP

FROST DUAL PRISM

MACRO FUNCTION

- > 1pc rotation 8-faced prism, and 1pc rotation 16-faced prism, single-direction rotation
- > Touch LCD display
- > Frost dual prism
- > Electronic ballast
- > 7500K color temperature
- > 1500H average lamp life
- > 14 colors + white, bi-direction rotation
- > 17 fixed gobo, gobo shake
- > Beam 0-3°, Spot 3-20°, Wash 20-60° Angel
- > Sta 20CH/Min 20CH DMX Channel
- > 16/20 channels



5201153 FLYCASE B350
Includes: Galaxy B350 X 2
Flycase



MASTER DIMENSION: 470x470x590 mm / 18.5x18.5x22.8 in
GROSS WEIGHT: 23 Kg / 50 lb MASTER PIECES: 1u

GALAXY B230 GALAXY B200 GALAXY B120 BEAM MOVING HEAD LIGHTS



HIGH POWER 230W OSRAM LAMP

FOCUS ADJUSTMENT

- > Electronic ballast
- > 8500K color temperature
- > 14 colors+ blank color wheel
- > 17 fixed gobo + blank gobo
- > Pan/Tilt: X axis 540°, Y axis 250° automatic accurate positioning
- > Parallel beam angel 0-3.8°
- > 16/20 channels
- > PowerCON® AC Input



5201152 FLYCASE B230
Includes: Galaxy B230 X 2
Flycase

MASTER DIMENSION: 450x420x550 mm / 17.8x16.5x21.6 in
GROSS WEIGHT: 18.49 Kg / 41 lb MASTER PIECES: 1u

HIGH POWER 200W PHILIPS LAMP

FOCUS ADJUSTMENT

- > Electronic ballast
- > 8500K color temperature
- > 12 colors+ blank color wheel
- > 17 fixed gobo + blank gobo
- > Pan/Tilt: X axis 540°, Y axis 250° automatic accurate positioning
- > Parallel beam angel 0-3.8°
- > 16/20 channels
- > PowerCON® AC Input



5201151 FLYCASE B200
Includes: Galaxy B200 X 2
Flycase

MASTER DIMENSION: 450x420x550 mm / 17.8x16.5x21.6 in
GROSS WEIGHT: 18.69 Kg / 41 lb MASTER PIECES: 1u

HIGH POWER 120W SUPERIOR QUALITY LAMP

LCD DISPLAY

- > Electronic ballast
- > 8500K color temperature
- > 2000H Color: 12 colors + blank color gobo
- > 11 fixed gobo + blank gobo
- > Rotation 8-face prism with prism rotation
- > 0-100% linear adjustment
- > Pan/Tilt: X axis 540°, Y axis 250° automatic accurate positioning
- > Standard DMX512, automatic and Master/Slave mode
- > 12 channels

MASTER DIMENSION: 340x310x470 mm / 14x12x18.5 in
GROSS WEIGHT: 10 Kg / 22 lb MASTER PIECES: 1u

LEDX > SERIES

LEDX W1 TWO-SIDE BEAM

- > 18pcs 3W 3in1 RGB LEDs lamp
- > 50.000 hrs lifetime lamp
- > DMX 512, Master/Slave, Auto Run, Stand alone, Sound active, user modes
- > 14CHs /16CHs(4in1) channels
- > Pan 540° Tilt 270° head movement
- > Electronic Dimming 0-100%
- > LED display menu with invert
- > Fan cooling Over heat protection

MASTER DIMENSION: 450x290x570 mm / 17.7x11.4x22.4 in
GROSS WEIGHT: 14.64 Kg / 32 lb
MASTER PIECES: 4u



LEDX 2B DUAL TWO-SIDE BEAM

- > LED
- > 2pcs 10W high power RGBW (for 2B)
- > 8pcs 10W high power RGBW LEDs (for 2w)
- > DMX channel 10/18channels
- > Movement Pan/Tilt X axis 540 degree, Y axis Endless rotation
- > Control mode DMX512 /Master-Slave/Auto run/sound
- > Display LED display
- > 8 internal program, sound mode can control by DMX 512
- > Beam angle 3 degree (for 2B) 25 degree (for 2w)

MASTER DIMENSION: 420x270x410 mm / 16.7x10.8x16.1 in
GROSS WEIGHT: 14.37 Kg / 31 lb
MASTER PIECES: 4u



LEDX 2W DUAL TWO-SIDE WASH

- > HIGH POWER LEDs RGBW
- > DMX CONTROL
- > COMPACT DESIGN
- > PRECISION MOVEMENTS
- > LCD DISPLAY

LEDX MINI W1 LEDX W2-W4 LEDX W3 MINI WASH MOVING HEADS LIGHTS



- > Lamp 4pcs 10W 4in 1 LEDs (for MINI W1) 7pcs 10W 4in 1 RGBW LEDs (for W2) 5pcs 15W 5in 1 RGBWA LEDs (for W3) 7pcs 18W 6in 1 RGBWA+UV LEDs (for W4)

- > 50,000 hours Lifetime lamp
- > DMX 512, Master/Slave, Auto Channels
- > 7CHs /12CHs (for W1) 8CHs /13CHs (for W2) 9CHs /14CHs (for W3) 10CHs /15CHs (for W4)

- > Head movement Pan 540°Tilt 270° (for W1/W3/W4) Pan 540°Tilt 180° (for W2)
- > Electronic Dimming 0-100%
- > Display LED display menu with invert

- > UP TO 6in1 RGBWA+UV
- > DMX AND STAND ALONE
- > LCD DISPLAY
- > COMPACT AND LIGHTWEIGHT DESIGN
- > FAST MOVEMENTS

MASTER DIMENSION: 450x290x570 mm / 17.7x11.4x22.4 in (LEDX Mini W1) 390x280x400 mm / 15.3x10.2x15.7 in (LEDX Mini W2) 14.64 Kg / 32 lb (LEDX Mini W1: 9 Kg / 19 lb)
MASTER PIECES: 4u



DMX 192

DMX SIGNAL CONTROLLER

192 CHANNEL

240 SCENES

6 CHASES 240 STEPS

MIDI CONTROL

- > Black out function/18channels
- > Control of Speed (SPEED) and change of scenes (FADE)

MASTER DIMENSION: 570x350x550 mm / 22.4x13.7x21.6 in
GROSS WEIGHT: 21.5 Kg / 47 lb
MASTER PIECES: 10u



LASER

> SERIES



XSTAGE 4000B

HIGH POWER LASER LIGHT

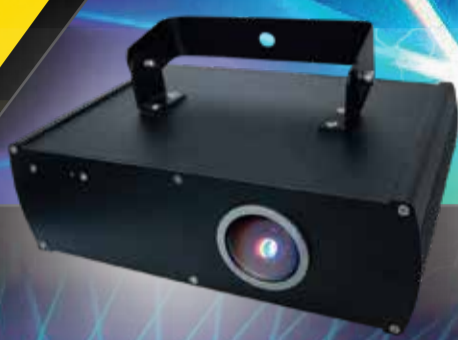
12 DMX CHANNEL

HIGH SPEED OPTICAL SCANNER

HIGH POWER CLASS 3B

- > Power Blue: 4000mW
- > Beam/Graphic patterns: 128
- > Operation Modes: Automatic/Sound-activated/DMX
- > Scanner rotate angle: +/-20° angle
- > Scanner speed: 25kpps

XSTAGE 800RGB



12 DMX CHANNEL

HIGH POWER CLASS 3R

- > Power Red: 150mW
- > Power Green: 50mW
- > Power Blue: 100mW
- > Operation Modes: Automatic/Sound-activated/DMX
- > Motor rotate angle: +/-20° angle
- > Basic pattern: Beam/Point/Geometric figure

XSTAGE 600RG



32-BEAM GRAPHIC PATTERNS

DIGITAL DISPLAY

- > Power Red: 200mW
- > Power Green: 100mW
- > High power class 3R
- > 12-DMX channels
- > Operation Modes: Automatic/Sound-activated/DMX

LEDX

> SERIES



LEDX F1

LEDX F2

ULTRA-FLAT HIGH POWER LEDS

- > Led Display + Control Buttons
- > 18pcs for 1W RGB LEDs
- > 6-DMX channels
- > Auto with master-slave
- > 25° LED angel
- MASTER DIMENSION: 440x365x440 mm / 17.3x14.3x17.3 in
- GROSS WEIGHT: 10 Kg / 22 lb
- MASTER PIECES: 12u

ULTRA-FLAT HIGH POWER LEDS

- > 7pcs for 3W 3-in-1 LEDs
- > DMX 512 mode (7Channel)
- > Auto with master-slave
- > 25° LED angel ultra flat
- MASTER DIMENSION: 440x365x440 mm / 17.3x14.3x17.3 in
- GROSS WEIGHT: 10 Kg / 22 lb
- MASTER PIECES: 12u

LEDX P1

HIGH POWER LED RGB

177 PCS

- > Lightweight design
- > Long life use
- > 177pcs Super bright φ10 leds(Red 60pcs, Green 60pcs, Blue 57pcs)
- > >100,000 hours life time
- > 6DMX Channel (DMXcontrol)
- > RGB Color can be mixed to more than 16.7 Million colours
- MASTER DIMENSION: 730x485x350 mm / 28.7x19.1x13.7 in
- GROSS WEIGHT: 13.73 Kg / 30 lb
- MASTER PIECES: 6U

LEDX P2-P4

36x1/3W HIGH POWER RGB LEDS

- > 36pcs of 1W(P2)/3W(P4) high power RGB LEDs(R12, G12, B12)
- > 25° BEAM angel
- > 50,000 hours life time
- > 0-100% with regulated constant color control DIMMER
- > 10 Flashes per second (any color) STROBE
- > 4 Digital LED display figures
- > 6DMX Channel (DMXcontrol)
- MASTER DIMENSION: 730x485x350 mm / 28.7x19.1x13.7 in
- GROSS WEIGHT: 13.73 Kg / 30 lb
- MASTER PIECES: 6U

MAGIC

> SERIES



LED MAGIC X2

MAGIC BALL LIGHT

360° COVERAGE

DMX CONTROL

- > 4x3W ultra bright RGBW LEDs
- > DMX 512, Master/Slave, Auto Run, Stand alone, Sound active, user modes
- > 6 channels
- > Strobe effects, red, green, blue and white four colors change.
- > 177 pcs
- MASTER DIMENSION: 530x270x770 mm / 20.8x10.6x30.3 in
- GROSS WEIGHT: 11.72 Kg / 25 lb
- MASTER PIECES: 4u

LED MAGIC X4

SPIDER LIGHT

DMX CONTROL

HIGH POWER LED RGBW

- > 8 x 3W LEDs (2xRed-Green-Blue-White)
- > 4-Button DMX LED Display
- > Sound Active, Mode or DMX modes
- > 10-14 DMX channels
- > Electronic Dimming: 0 - 100%
- > DMX 512 control
- > LED pulse & strobe effect
- > 270 degree tilt from smooth Stepper Motors
- > 4° beam angle
- MASTER DIMENSION: 400x330x375 mm / 15.7x13x14.7 in
- GROSS WEIGHT: 11.5 Kg / 25 lb
- MASTER PIECES: 4u

MAGIC G1

3IN1 FX LIGHT



RGBA GOBO/WASH/LASER

- > Gobo: 8x1W
- > Wash: 8x1W
- > Laser - Red 100mW Green 30mW
- > 16-DMX Channels
- > Sound Active, Show Mode or DMX
- > Stand Alone or Master/Slave Set Up
- MASTER DIMENSION: 485x350x440 mm / 19.1x13.7x17.3 in
- GROSS WEIGHT: 14.5 Kg / 31 lb
- MASTER PIECES: 4u

MAGIC G2

3IN1 FX LIGHT

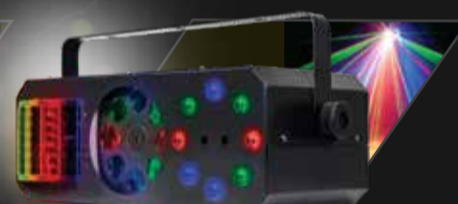


RGBA MAGICBALL/WASH/LASER

- > MagicBall: 3x1W
- > Wash: 8x1W
- > Laser - Red 100mW Green 30mW
- > 15-DMX Channels
- > 63 Preset Color Combinations
- > 5 built-in shows
- MASTER DIMENSION: 595x350x440 mm / 23.4x13.7x17.3 in
- GROSS WEIGHT: 14.5 Kg / 31 lb
- MASTER PIECES: 4u

MAGIC G3

4IN1 FX LIGHT



RGBW DERBY/GOBO/WASH/LASER

- > Derby: 4x1W
- > Gobo: 8x1W
- > Wash: 8x1W
- > Laser - Red 100mW Green 30mW
- > 23-DMX Channels
- > 8 Gobos / 5 built-in shows
- MASTER DIMENSION: 545x445x440 mm / 21.4x17.3x17.3 in
- GROSS WEIGHT: 17 Kg / 37 lb
- MASTER PIECES: 4u

LED X P3 LED PAR LIGHTS

54x3W LED



- > 54pcs x 3W LED
- > 25° BEAM angel
- > 10 FLASHES per second
- > 50,000 hours life time
- > DMX512, Master-slave, stand-alone, music Activate

- > 0-100% DIMMER > 4CH/8 CH Channel (DMX ctrl)
- MASTER DIMENSION: 730x485x350 mm / 28.7x19.1x13.7 in
- GROSS WEIGHT: 13.73 Kg / 30 lb
- MASTER PIECES: 6U

THUNDER

> SERIES

THUNDER 3000 HIGH-IMPACT STROBE

3000W HIGH POWER LAMP

SMART CONTROL

LONG-LIFE XENON STROBE TUBE

DMX CONTROL

- > 3000W long-life Xenon lamp. Strobe tube included
- > 5600K Color Temperature
- > Blinder effect with auto fade
- > Fann cooling temperature
- > Smart integrated heat control
- > Atomic Detonator remote control
- > DMX, Auto control mode
- > 1CH/3CH/4CH control channels
- MASTER DIMENSION: 555x436x340 mm / 21.8x17.1x13.3 in
- GROSS WEIGHT: 19 Kg / 41 lb
- MASTER PIECES: 2u



THUNDER 1500 STROBE

1500W HIGH POWER LAMP

DMX CONTROL

BUILT-IN PROGRAMS

LONG LIFE STROBE TUBE

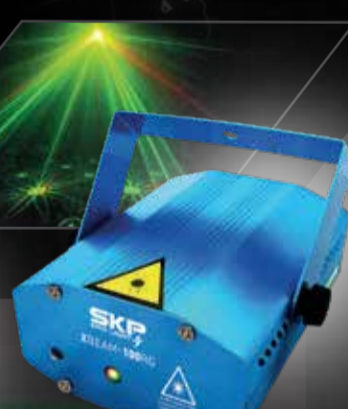


- > Glass lighting tube
- > DMX 512, Stroboscope, Built-in programs
- > 2 standard DMX512 control channel
- MASTER DIMENSION: 520x510x635 mm / 20.4x20.1x25 in
- GROSS WEIGHT: 19 Kg / 41 lb
- MASTER PIECES: 6u

XSTAGE 512RGB

XBEAM 150RG

XBEAM 100RG



12 DMX CHANNEL

HIGH POWER CLASS 1M

- > Power Red: 150mW
- > Power Green: 50mW
- > Power Blue: 100mW
- > Laser patterns: 16
- > Operation Modes: Automatic/Sound-activated/DMX
- > Motor rotate angle: 360° angle

12 DMX CHANNEL

HIGH POWER CLASS 3R

- > Power Red: 100mW
- > Power Green: 50mW
- > Operation Modes: Automatic/Sound-activated/DMX
- > Motor rotate angle: +/-20° angle
- > Basic pattern: Beam/Point/Geometric figure

HIGH POWER CLASS 1M

ULTRA-COMPACT DESIGN

- > Power Red: 100mW
- > Power Green: 50mW
- > Operation Modes: Automatic/Sound-activated/DMX
- > Motor rotate angle: 360° angle
- > Basic pattern: Point
- > Easy control and set up

MAGIC X1

MAGIC DANCE BALL



USB/SD PLAYER 80 LENSES

- > Remote Control (included)
- > 6x1W Colors, Red, Green, Blue, Yellow, White, Purple
- > USB MP3, Auto, Sound active, Master/Slave. It support USB or SD card. Can play MP3 format music. The color will change by the music rhythm.
- > 7" Diameter, 6.3" Height Size
- MASTER DIMENSION: 400x400x420 mm / 23.6x15.7x16.5 in
- GROSS WEIGHT: 15.5 Kg / 34 lb
- MASTER PIECES: 12u

MAGIC X3

DERBY LIGHT



AUDIO-RHYTHMIC LIGHTS

- > 6pcs 1W LED
- > High output LED Lighting effect produces a variety of color effects (Red, Green, Blue, Purple, Orange and White)
- > 6CH DMX Channels
- > Auto, Sound active, Master/Slave
- > Steel body material
- MASTER DIMENSION: 550x460x510 mm / 21.6x18.1x20.1 in
- GROSS WEIGHT: 13.5 Kg / 29 lb
- MASTER PIECES: 8u

MAGIC X5

FX LIGHT

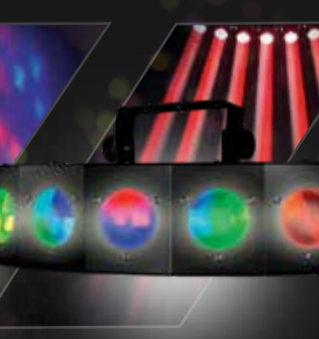


RGBW LEDS

- > 192 leds (Red 72pcs, Green 60pcs, Blue 60pcs)
- > 100,000 hours lifetime lamp
- > 6CH DMX Channels
- > Color gradual change
- > Dimmer control
- > Sound control, Auto, Master/Slave
- MASTER DIMENSION: 550x460x510 mm / 21.6x18.1x20.1 in
- GROSS WEIGHT: 15.5 Kg / 34 lb
- MASTER PIECES: CONTACT US

MAGIC X7

FX LIGHT



RGB LEDS

- > 392pcs RGBW LEDs
- > 35 LED Patterns, the patterns changer speed is adjustable
- > DMX 512, Master/Slave, Sound Control, auto (Signal mode)
- > 9CH DMX Channels
- > Sound control, Auto, Master/Slave (Control Mode)
- > Steel body material
- MASTER DIMENSION: 550x460x510 mm / 21.6x18.1x20.1 in
- GROSS WEIGHT: 15.5 Kg / 34 lb
- MASTER PIECES: CONTACT US